



# AUSTRALIAN NOTICES TO MARINERS

## Notices 1004 - 1047



*The Hydrographer and Staff of the Australian Hydrographic Office  
wish all users of Australian Navigational Products a Merry Christmas,  
a Happy New Year and safe, successful voyages in 2023.*



Published fortnightly by the Australian Hydrographic Office

Australian Notices to Mariners are the authority for correcting charts and publications published by the Australian Hydrographic Office covering Australia, Papua New Guinea, Solomon Islands, Australian Antarctic Territory and Timor-Leste.

Commodore S.T. DUNNE RAN  
*Hydrographer of Australia*

---

## SECTIONS.

- I. **Australian Notices to Mariners, including blocks and notes.**
- II. **Hydrographic Reports.**

## SUPPLEMENTS.

- I. **Tracings**
  - II. **Cumulative List of Australian Notices to Mariners.**
  - III. **Cumulative List of Temporary and Preliminary Australian Notices to Mariners.**
  - IV. **Temporary and Preliminary Notices in force.**
- 
- 

© Commonwealth of Australia 2022

This work is copyright. Apart from any use permitted under the Copyright Act 1968, no part may be reproduced by any process, adapted, communicated or commercially exploited without prior written permission from The Commonwealth represented by the Australian Hydrographic Office.

## IMPORTANT NOTICE

This edition of Notices to Mariners includes all significant information affecting AHO products which the AHO has become aware of since the last edition. All reasonable efforts have been made to ensure the accuracy and completeness of the information, including third party information, on which these updates are based. The AHO regards third parties from which it receives information as reliable, however the AHO cannot verify all such information and errors may therefore exist. The AHO does not accept liability for errors in third party information.

---

## GENERAL INSTRUCTIONS

The substance of these notices should be inserted on the charts affected.

Bearings are referred to the true compass and are reckoned clockwise from North; those relating to lights are given as seen by an observer from seaward.

Positions quoted in notices relate to WGS84 which is the horizontal datum for all charts produced by the Australian Hydrographic Office.

The range quoted for a light is its nominal range.

Depths are with reference to the chart datum of each chart. Heights are above mean high water springs or mean higher high water, as appropriate.

The capital letter (P) or (T) after the number of any notice denotes a preliminary or temporary notice respectively, which are contained separately at the end of the permanent notices.

---

## REPORTING OF DANGERS

Mariners are particularly requested to notify the AUSTRALIAN HYDROGRAPHIC OFFICE, Locked Bag 8801 Wollongong, NSW 2500 (e-mail [datacentre@hydro.gov.au](mailto:datacentre@hydro.gov.au) or, alternatively by filling in and submitting the [Hydrographic Notes](#) forms located on the web site – [www.hydro.gov.au](http://www.hydro.gov.au)), immediately on the discovery of new dangers or suspected dangers to navigation. For changes or defects in aids to navigation notify AusSAR (Fax 02-6230 6868 or email [rccaus@amsa.gov.au](mailto:rccaus@amsa.gov.au)).

---

## AUTHORISED USE

Copies of Australian notices are available free of charge from the Australian Hydrographic Office (AHO) website ([www.hydro.gov.au](http://www.hydro.gov.au)) and through the eNotices (email) service ([www.hydro.gov.au/enotices/enotices.htm](http://www.hydro.gov.au/enotices/enotices.htm)).

Individual Notices may be copied for the purpose of inserting Notice substance on official charts and publications. Paper copies may be printed by chart agents and distributed to customers on a cost recovery basis. Participating chart agents are listed on the AHO website as providing a 'Paper Notices to Mariners' service ([www.hydro.gov.au/webapps/jsp/agents/agents-list.jsp](http://www.hydro.gov.au/webapps/jsp/agents/agents-list.jsp)). Copies of the notices may not be sold for profit without prior written agreement.

## NUMERICAL INDEX OF NOTICES TO MARINERS

### Edition No 25

Notices	Aus Chart, INT Chart, ENC Cell, AHP, BA Pubs
1004	Aus 72, 293, 296, 299, SLB 102
1005	Products - New Charts and New Editions to be published shortly
1006	Aus 200, 808, 809
1007	Aus 4060, INT 60
1008	Aus 827, 828
1009	Aus 25
1010	Aus 65
1011	Aus 73
1012	Aus 329, 744, 745
1013	Aus 744, 745, 746
1014	Aus 117
1015	Aus 64
1016	Aus 116
1017	Aus 157
1018	Aus 163
1019	Aus 179, 800
1020(T)	Aus 200
1021(T)	Aus 236
1022(T)	Aus 256, 827
1023(T)	Aus 260, 367, 822
1024(T)	Aus 248, 260, 367, 820, 822
1025(T)	Aus 260
1026(T)	Aus 826
1027(T)	Aus 754
1028(T)	Aus 328, 742
1029(T)	Aus 116, 335, 336, 4070, 4708, 4709, 4710, INT 70, 708, 709, 710
1030(T)	Aus 327, 742
1031(T)	Aus 328, 329, 4723, INT 723
1032(T)	Aus 755
1033(T)	Aus 327, 4722, 4723, INT 722, 723
1034(T)	Aus 318
1035(T)	Aus 323
1036(T)	Aus 754
1037(T)	Aus 72, 746
1038(T)	Aus 328, 329, 744
1039(T)	Aus 754
1040(T)	Aus 136, 778
1041(T)	Aus 343, 346, 485, 776, 4709, INT 709
1042(T)	Aus 143, 155
1043(T)	Aus 143
1044(T)	Aus 143
1045(T)	Aus 143, 144
1046(T)	Aus 143
1047(T)	Aus 801

## NUMERICAL INDEX OF CHARTS AFFECTED

### Edition No 25

Aus Chart	Notices
Aus 25	1009
Aus 64	1015
Aus 65	1010
Aus 72	1004, 1037(T)
Aus 73	1011
Aus 116	1016, 1029(T)
Aus 117	1014
Aus 136	1040(T)
Aus 143	1042(T), 1043(T), 1044(T), 1045(T), 1046(T)
Aus 144	1045(T)
Aus 155	1042(T)
Aus 157	1017
Aus 163	1018
Aus 179	1019
Aus 200	1006, 1020(T)
Aus 236	1021(T)
Aus 248	1024(T)
Aus 256	1022(T)
Aus 260	1023(T), 1024(T), 1025(T)
Aus 293	1004
Aus 296	1004
Aus 299	1004
Aus 318	1034(T)
Aus 323	1035(T)
Aus 327	1030(T), 1033(T)
Aus 328	1028(T), 1031(T), 1038(T)
Aus 329	1012, 1031(T), 1038(T)
Aus 335	1029(T)
Aus 336	1029(T)
Aus 343	1041(T)
Aus 346	1041(T)
Aus 367	1023(T), 1024(T)
Aus 485	1041(T)
Aus 742	1028(T), 1030(T)
Aus 744	1012, 1013, 1038(T)
Aus 745	1012, 1013
Aus 746	1013, 1037(T)
Aus 754	1027(T), 1036(T), 1039(T)
Aus 755	1032(T)
Aus 776	1041(T)
Aus 778	1040(T)
Aus 800	1019
Aus 801	1047(T)
Aus 808	1006
Aus 809	1006
Aus 820	1024(T)
Aus 822	1023(T), 1024(T)
Aus 826	1026(T)
Aus 827	1008, 1022(T)
Aus 828	1008
Aus 4060	1007
Aus 4070	1029(T)
Aus 4708	1029(T)
Aus 4709	1029(T), 1041(T)

Aus Chart	Notices
Aus 4710	1029(T)
Aus 4722	1033(T)
Aus 4723	1031(T), 1033(T)
SLB 102	1004

INT Chart	Notices
INT 60	1007
INT 70	1029(T)
INT 708	1029(T)
INT 709	1029(T), 1041(T)
INT 710	1029(T)
INT 722	1033(T)
INT 723	1031(T), 1033(T)

**1004 AUSTRALIA - Products - New Charts, New Editions, Withdrawn Charts**

Australian Hydrographic Office , UKHO

**New Charts**

<i>Chart</i>	<i>Title and Geographical limits</i>	<i>Scale</i>	<i>Publication Date</i>	<i>Remarks</i>
NIL				

**New Electronic Navigation Chart (Aus ENC)**

<i>Cell Name</i>	<i>Title</i>	<i>Publication Date</i>	<i>Remarks</i>
NIL			

**New Editions and Withdrawn Charts**

<i>Chart</i>	<i>Title</i>	<i>Scale</i>	<i>Publication Date</i>	<i>Remarks</i>
SLB 102 <b>(Edition 4)</b>	South Pacific Ocean - Solomon Islands - Plans in the New Georgia Group Plans: Blackett Strait Gizo Harbour and Approaches Port Noro Ringgi Cove Lever Harbour	1:50 000 1:25 000 1:20 000 1:15 000 1:7 500	9 December 2022	New edition with general updating throughout; including new bathymetric data and infrastructure in Port Noro. <b>Chart SLB 102 Edition 3 dated 21 February 2020 is now superseded and must be withdrawn from use.</b>
Aus 293 <b>(Edition 3)</b>	Australia - North Coast - Torres Strait - Prince of Wales Channel	1:37 500	9 December 2022	New edition with general updating throughout; including new bathymetric data. <b>Chart Aus 293 Edition 2 dated 10 October 2014 is now superseded and must be withdrawn from use.</b>
Aus 296 <b>(Edition 3)</b>	Australia - North Coast - Torres Strait - Prince of Wales Channel to Varzin Passage	1:37 500	9 December 2022	New edition with general updating throughout; including new bathymetric data. <b>Chart Aus 296 Edition 2 dated 10 October 2014 is now superseded and must be withdrawn from use.</b>
Aus 299 <b>(Edition 5)</b>	Australia - North Coast - Torres Strait - Approaches to Thursday Island	1:12 500	9 December 2022	New edition with general updating throughout; including new bathymetric data. <b>Chart Aus 299 Edition 4 dated 26 September 2014 is now superseded and must be withdrawn from use.</b>

**Charts withdrawn without replacement**

<i>Chart</i>	<i>Title</i>	<i>Scale</i>	<i>Remarks</i>
Aus 72 <b>Edition 1</b>	Australia - West Coast - Western Australia - Plans in Western Australia (Sheet 3) Plans:		26 August 2011
	Norwegian Bay and Point Cloates	1:50 000	Paper chart rationalisation.
	Mauds Landing	1:37 500	
	Point Murat Wharf	1:12 500	
	Exmouth Boat Harbour	1:10 000	

**1004 AUSTRALIA - Products - New Charts, New Editions, Withdrawn Charts****Australian National Tide Tables 2023**

*AHP No*      *Remarks*  
 AHP11      Australian National Tide Tables 2023 for Australia, Antarctica, Papua New Guinea, Solomon Islands and Timor-Leste provides tidal information for 2023. Now available as a pdf download from the AHO website products download page ([www.hydro.gov.au/webapps/jsp/downloads/products.jsp](http://www.hydro.gov.au/webapps/jsp/downloads/products.jsp)).

**AusTides 2023**

*AHP No*      *Remarks*  
 AHP114      AusTides 2023 Edition 1 (V1.2.00) for Australia, Antarctica, Papua New Guinea, Solomon Islands and Timor-Leste provides tidal information for 2023. Now available as a pdf download from the AHO website products download page ([www.hydro.gov.au/webapps/jsp/downloads/products.jsp](http://www.hydro.gov.au/webapps/jsp/downloads/products.jsp)).

**Papua New Guinea National Tide Tables 2023**

*Remarks*  
 The Papua New Guinea National Tide Tables 2023 provides tidal information for Papua New Guinea ports. Now available as a pdf download from the AHO website products download page ([www.hydro.gov.au/webapps/jsp/downloads/products.jsp](http://www.hydro.gov.au/webapps/jsp/downloads/products.jsp)).

**Admiralty publication**

<i>NP No</i>	<i>Title</i>	<i>Date</i>	<i>Remarks</i>
NP283(2)	ADMIRALTY List of Radio Signals Maritime Safety Information Services The Americas, Far East and Oceania Volume 3(2) 3rd Edition (2022).	15/12/2022	The 2nd Edition (2021) is cancelled.

**Chart permanently withdrawn**

Charts listed above as withdrawn no longer meet chart carriage requirements and should be marked as "superseded" and replaced with the new chart/ new edition listed prior to passage through the area covered by the new chart.

When placing orders with a chart agent between notice of forthcoming edition and its publication, mariners should advise whether their order pertains to the current edition or the new edition.

For further details refer to the AHO website at [www.hydro.gov.au](http://www.hydro.gov.au) for new edition and new chart stock arrival information.

**1005 AUSTRALIA - Products - New Charts and New Editions to be published shortly**

Australian Hydrographic Office

**New Charts to be published shortly**

<i>Chart</i>	<i>Title</i>	<i>Scale</i>	<i>Remarks</i>
NIL			

**New Electronic Navigation Chart (Aus ENC) to be published shortly**

<i>Cell Name</i>	<i>Title</i>	<i>Remarks</i>
NIL		

**New Editions to be published shortly**

<i>Chart</i>	<i>Title</i>	<i>Scale</i>	<i>Remarks</i>
NIL			

**1006 AUSTRALIA - NEW SOUTH WALES - Port Jackson - South Head - Wreck southeastwards**

Port Authority of New South Wales

**Aus 200 [924/2022]**

Insert depth, 53m, enclosed by danger circle with legend, Wk 33° 50'.714 S 151° 19'.219 E

**Aus 808 [965/2022]**

Insert depth, 53m, enclosed by danger circle with legend, Wk 33° 50'.71 S 151° 19'.22 E

**Aus 809 [922/2022]**

Insert depth, 53m, enclosed by danger circle with legend, Wk 33° 50'.71 S 151° 19'.22 E

**1007 PACIFIC OCEAN - Nouvelle Caledonie to Viti Levu - Submarine cables**

UKHO

**Aus 4060 (INT 60) [973/2022]**

Insert	submarine cable, between	18° 10'.0 S	178° 28'.1 E
		18° 30'.2 S	178° 22'.1 E
		18° 53'.5 S	177° 53'.8 E
		18° 59'.1 S	177° 14'.2 E
		19° 08'.4 S	177° 01'.9 E
		19° 38'.8 S	175° 08'.6 E
		19° 43'.1 S	174° 30'.2 E
		19° 57'.3 S	173° 39'.8 E
		20° 00'.2 S	171° 59'.5 E
		20° 34'.7 S	170° 30'.4 E
		20° 47'.1 S	169° 48'.8 E
		20° 49'.4 S	168° 41'.0 E
		20° 58'.8 S	167° 46'.0 E
		21° 18'.5 S	167° 23'.9 E
		21° 33'.6 S	167° 30'.2 E
		22° 17'.9 S	167° 08'.5 E
		22° 24'.9 S	166° 55'.7 E
		22° 42'.7 S	167° 18'.4 E
		22° 40'.1 S	167° 26'.0 E
		22° 24'.9 S	166° 55'.7 E
		22° 20'.3 S	166° 25'.8 E
		22° 16'.1 S	166° 24'.8 E

submarine cable, between

**1008 AUSTRALIA - QUEENSLAND - Taylors Beach - Light buoy**

Former Notice - 323(T)/2022 is cancelled

Maritime Safety Queensland

**Aus 827 [518/2022]**

Replace light buoy with safe water pillar light buoy, /so.2s, without topmark 18° 36'.9 S 146° 21'.6 E

**Aus 828 [518/2022]**

Replace light buoy with safe water pillar light buoy, /so.2s, without topmark 18° 36'.9 S 146° 21'.6 E

**1009 AUSTRALIA - NORTHERN TERRITORY - Darwin - Charles Point - Depths**

Geoscience Australia

**Aus 25 [477/2022]**

Insert accompanying block 12° 21'.2 S 130° 36'.7 E

Delete	magenta dashed line, between	12° 28'.49 S	130° 41'.46 E
		12° 28'.43 S	130° 41'.51 E
		12° 28'.49 S	130° 41'.62 E
	magenta legend, D	12° 28'.50 S	130° 41'.49 E

**1010 AUSTRALIA - WESTERN AUSTRALIA - Barrow Island - Town Point - Light buoy**

Chevron Australia Notice 6/2022

**Aus 65 [813/2022]**

Insert	special conical light buoy, <i>Fl(4)Y.20s</i> , without topmark	20° 48'.75 S	115° 29'.88 E
--------	---	--------------	---------------

Delete	light buoy	20° 48'.8 S	115° 29'.9 E
--------	------------	-------------	--------------

**1011 AUSTRALIA - WESTERN AUSTRALIA - Carnarvon - Gascoyne River - Light beacons**

Department of Transport WA

**Aus 73 (Carnarvon) [349/2022]**

Insert	port lateral light beacon, <i>Fl.R.3s</i> , with topmark	24° 53'.959 S	113° 38'.475 E
--------	--	---------------	----------------

	starboard lateral light beacon, <i>Fl.G.3s</i> , with topmark	24° 53'.972 S	113° 38'.496 E
--	---	---------------	----------------

Delete	light beacon	24° 54'.00 S	113° 38'.48 E
--------	--------------	--------------	---------------

**1012 AUSTRALIA - WESTERN AUSTRALIA - Exmouth Gulf - Bay of Rest - Marine farm**

Department of Transport WA Notice 2976(T)/2022

**Aus 329 [1055/2021]**

Insert	marine farm symbol with legend ( <i>see Note</i> ), centred on	22° 16'.32 S	114° 09'.58 E
--------	--	--------------	---------------

Delete	depth, 7 <sub>6</sub> m	22° 16'.6 S	114° 09'.2 E
--------	-------------------------	-------------	--------------

**Aus 744 [NE 16/9/2022]**

Insert	marine farm symbol with legend ( <i>see Note</i> ), centred on	22° 16'.32 S	114° 09'.58 E
--------	--	--------------	---------------

**Aus 745 [878/2021]**

Insert	marine farm symbol with legend ( <i>see Note</i> ), centred on	22° 16'.32 S	114° 09'.58 E
--------	--	--------------	---------------



**1013 AUSTRALIA - WESTERN AUSTRALIA - Exmouth to Point Murat - Chart withdrawn; chart notes; legends; chart limits; ZOC diagram; nav aids**

Australian Hydrographic Office

Note: position of existing chart notes may vary on certain charts.

**Aus 744 [1012/2022]**

Insert	magenta legend, <i>ENC (see Note)</i>	21° 48'.2 S	114° 12'.7 E
	magenta legend, <i>ENC (see Note)</i>	21° 57'.0 S	114° 11'.0 E
	accompanying chart note, ELECTRONIC NAVIGATIONAL CHART (ENC)	22° 07'.5 S	114° 50'.0 E

Delete	magenta limits with legend, Aus 72, centred on	21° 49'.2 S	114° 11'.5 E
	magenta limits with legend, Aus 72, centred on	21° 57'.3 S	114° 08'.7 E
	magenta limits, centred on	22° 22'.5 S	114° 52'.5 E
	magenta legend, Aus 72, and arrows	22° 22'.9 S	114° 51'.9 E
	magenta limits, centred on	22° 23'.3 S	114° 52'.2 E

**Aus 745 [1012/2022]**

Insert	magenta legend, <i>ENC (see Note)</i>	21° 48'.2 S	114° 12'.7 E
	magenta legend, <i>ENC (see Note)</i>	21° 57'.5 S	114° 10'.0 E
	magenta legend, <i>ENC (see Note)</i>	22° 34'.7 S	113° 36'.7 E
	beacon with triangular topmark apex down	22° 37'.34 S	113° 40'.30 E
	a dashed line in a direction 297° for a distance of 1.35M, thence a continuous line for 3.25M, with legend 117°, emanating from beacon	22° 37'.34 S	113° 40'.30 E
	accompanying chart note, ELECTRONIC NAVIGATIONAL CHART (ENC)	22° 39'.3 S	114° 08'.0 E
	a dashed line in a direction 241° for a distance of 2.32M, thence a continuous line for 5M, with legend 061°, emanating from Entrance Hill	22° 43'.53 S	113° 45'.22 E
	magenta legend, <i>ENC (see Note)</i>	22° 47'.9 S	113° 37'.4 E
	accompanying ZOC diagram	22° 58'.0 S	114° 00'.0 E
	magenta legend, <i>ENC (see Note)</i>	23° 01'.6 S	113° 44'.0 E
	special spar buoy without topmark	23° 04'.21 S	113° 44'.57 E

Delete	magenta limits with legend, Aus 72, centred on	21° 49'.2 S	114° 11'.5 E
	magenta limits with legend, Aus 72, centred on	21° 57'.3 S	114° 08'.7 E
	magenta limits with legend, Aus 72, centred on	22° 40'.0 S	113° 41'.0 E
	magenta limits with legend, Aus 72, centred on	23° 03'.0 S	113° 46'.0 E

**Aus 746 [316/2021]**

Insert	magenta legend, <i>ENC (see Note)</i>	23° 08'.2 S	113° 43'.0 E
	accompanying chart note, ELECTRONIC NAVIGATIONAL CHART (ENC)	23° 55'.0 S	113° 40'.0 E
	accompanying ZOC diagram	24° 04'.0 S	113° 42'.0 E

Delete	magenta limits with legend, Aus 72, centred on	23° 08'.0 S	113° 47'.0 E
--------	--	-------------	--------------

**1014 AUSTRALIA - WESTERN AUSTRALIA - Fremantle - Buoy**

Fremantle Sailing Club

**Aus 117 [977/2022]**

Delete	buoy and legend, Offshore Finish	32° 03'.44 S	115° 43'.99 E
--------	----------------------------------	--------------	---------------

**1015 AUSTRALIA - WESTERN AUSTRALIA - Port of Ashburton - Depth**

Surrich Hydrographics

**Aus 64 [18/2022]**

Insert	depth, 5m, enclosed by contour	21° 38'.95 S	115° 01'.89 E
--------	--------------------------------	--------------	---------------

**1016 AUSTRALIA - WESTERN AUSTRALIA - Warnbro Sound - Safety Bay - Light buoy**

Department of Transport WA Notice WA913/20/2022

**Aus 116 (Warnbro Sound) [815/2022]**

Delete	light buoy	32° 18'.55 S	115° 43'.16 E
--------	------------	--------------	---------------

**1017 AUSTRALIA - VICTORIA - Port Phillip - Corio Bay - Light buoys**

Ports Victoria Notice 348/2022

**Aus 157 [688/2022]**

Insert	special pillar light buoy, <i>Fl(4)Y.12s</i> , without topmark	38° 06'.447 S	144° 22'.608 E
	special pillar light buoy, <i>Fl(4)Y.12s</i> , without topmark	38° 06'.893 S	144° 22'.963 E
	special pillar light buoy, <i>Fl(4)Y.12s</i> , without topmark	38° 07'.309 S	144° 23'.317 E

**1018 AUSTRALIA - TASMANIA - Burnie - AIS**

Marine and Safety Tasmania Notice M407/2022

**Aus 163 [721/2022]**

Insert	magenta circle with legend, <i>AIS</i> , centred on	41° 03'.042 S	145° 56'.288 E
--------	---	---------------	----------------

**Aus 163 (Burnie) [721/2022]**

Insert	magenta circle with legend, <i>AIS</i> , centred on	41° 03'.042 S	145° 56'.288 E
--------	---	---------------	----------------

**1019 AUSTRALIA - TASMANIA - Flinders Island - Babel Island to Vansittart Shoals - Depths**

Australian Hydrographic Office

**Aus 179 (Franklin Sound) [269/2022]**

Insert	depth, $8_8m$ (a)	40° 14'.71 S	148° 27'.06 E
	depth, $7_2m$ (b), and extend contour E to enclose (a) and (b)	40° 15'.26 S	148° 26'.70 E
Delete	depth, $10_8m$	40° 14'.1 S	148° 26'.8 E
	depth, $13_5m$	40° 15'.3 S	148° 26'.5 E

**Aus 800 [983/2022]**

Insert	depth, $17_7m$ , enclosed by contour	39° 55'.63 S	148° 21'.09 E
	depth, $8_8m$ (a)	40° 14'.71 S	148° 27'.06 E
	depth, $7_2m$ (b), and extend contour E to enclose (a) and (b)	40° 15'.26 S	148° 26'.70 E
Delete	depth, $15_3m$	40° 14'.5 S	148° 27'.3 E

**1020(T)/2022 AUSTRALIA - NEW SOUTH WALES - Port Jackson - Sydney Harbour Bridge - Harbour works completed**

*Former Notice* - 694(T)/2021 is cancelled  
Port Authority of New South Wales Notice 16/2021

Cancel this notice on receipt.

**Chart formerly affected - Aus 200****1021(T)/2022 AUSTRALIA - QUEENSLAND - Moreton Bay - Mud Island - Light buoy unlit**

Maritime Safety Queensland Notice 533(T)/2022

The starboard lateral light buoy, *Fl.G.2-5s* (27° 21'.43 S 153° 15'.36 E), is unlit.

**Chart temporarily affected - Aus 236****1022(T)/2022 AUSTRALIA - QUEENSLAND - Rattlesnake Island - Live firing completed**

*Former Notice* - 947(T)/2022 is cancelled  
Maritime Safety Queensland Notice 462(T)/2022, 473(T)/2022

Cancel this notice on receipt.

**Chart formerly affected - Aus 256 - Aus 827****1023(T)/2022 AUSTRALIA - QUEENSLAND - Shoalwater Bay - Live firing completed**

*Former Notice* - 948(T)/2022 is cancelled  
Maritime Safety Queensland Notice 453(T)/2022

Cancel this notice on receipt.

**Chart formerly affected - Aus 260 - Aus 367 - Aus 822****1024(T)/2022 AUSTRALIA - QUEENSLAND - Shoalwater Bay - Live firing**

Maritime Safety Queensland Notice 535(T)/2022

Live firing will be conducted in the marine component of the Shoalwater Bay training area during the period 15 to 16 December 2022.

A marine danger area extends to all internal waters bounded by the following positions:

22° 46'.20 S 150° 48'.51 E  
22° 41'.12 S 150° 50'.17 E  
22° 32'.22 S 150° 47'.36 E  
22° 28'.50 S 150° 45'.29 E  
22° 20'.36 S 150° 43'.10 E  
22° 17'.71 S 150° 33'.66 E  
22° 22'.58 S 150° 30'.40 E  
22° 31'.07 S 150° 34'.01 E  
22° 33'.77 S 150° 33'.27 E  
22° 20'.35 S 150° 12'.00 E  
22° 21'.20 S 150° 10'.52 E  
22° 35'.87 S 150° 28'.80 E.

All waters, creeks, beaches and other areas within the declared marine danger area are not available for access.

There will be a safe anchorage available at Freshwater, Port Clinton, West Water Port Clinton, South Arm Port Clinton, Pearl Bay and Island Head Creek.

Mariners are advised to keep clear of this area throughout the above times.

**Chart temporarily affected - Aus 248 - Aus 260 - Aus 367 - Aus 820 - Aus 822**

**1025(T)/2022 AUSTRALIA - QUEENSLAND - Thirsty Sound - Light buoy off station**  
Maritime Safety Queensland Notice 536(T)/2022

The port lateral light buoy, *Fl.R.4s* (22° 08'.02 S 150° 01'.43 E), is off station.

**Chart temporarily affected - Aus 260**

**1026(T)/2022 AUSTRALIA - QUEENSLAND - Upstart Bay - Obstructions**  
Maritime Safety Queensland

Obstructions on the seabed exist within a 1M radius of position 19° 44'.13 S 147° 40'.74 E.

Mariners area advised not to anchor or trawl in the area.

**Chart temporarily affected - Aus 826**

**1027(T)/2022 AUSTRALIA - WESTERN AUSTRALIA - Alkimos Reef - Survey operations completed**  
*Former Notice - 994(T)/2022 is cancelled*  
Department of Transport WA

Cancel this notice on receipt.

**Chart formerly affected - Aus 754**

**1028(T)/2022 AUSTRALIA - WESTERN AUSTRALIA - Barrow Island - Subsea operations northwestwards**  
Sapura Energy Australia

On or about 1 January 2023, Vessel *Sapura Constructor* and a ROV will be conducting subsea operations between positions 20° 26'.83 S 115° 07'.22 E and 20° 32'.08 S 115° 14'.88 E.

Mariners are advised to navigate with caution in the area. 0.27M clearance requested.

**Chart temporarily affected - Aus 328 - Aus 742**

**1029(T)/2022 AUSTRALIA - WESTERN AUSTRALIA - Cape Leeuwin - Light restored**  
*Former Notice - 624(T)/2022 is cancelled*  
Australian Maritime Safety Authority Final ATH 16/2022

Cancel this notice on receipt.

**Chart formerly affected - Aus 116 - Aus 335 - Aus 336 - Aus 4070 (INT 70) - Aus 4708 (INT 708) - Aus 4709 (INT 709) - Aus 4710 (INT 710)**

**1030(T)/2022 AUSTRALIA - WESTERN AUSTRALIA - Dampier Archipelago - Drill rig northwestwards moved**  
*Former Notice - 703(T)/2022 is cancelled*  
MODU *Valaris 107*

Cancel this notice on receipt.

**Chart formerly affected - Aus 327 - Aus 742**

**1031(T)/2022 AUSTRALIA - WESTERN AUSTRALIA - Exmouth Plateau - Survey operations**  
*Former Notice - 997(T)/2022 is cancelled*  
Shearwater

Cancel this notice on receipt.

**Chart formerly affected - Aus 328 - Aus 329 - Aus 4723 (INT 723)**

**1032(T)/2022 AUSTRALIA - WESTERN AUSTRALIA - Geographe Bay - Scientific instruments**

Former Notice - 800(T)/2022 is cancelled

Department of Transport WA Notice 2792/2022

Special light buoys, *Fl. Y.2-5s*, exist in the following positions:

33° 35'.49 S 115° 06'.99 E

33° 36'.01 S 115° 14'.99 E

33° 37'.62 S 115° 20'.28 E.

**Chart temporarily affected - Aus 755**

**1033(T)/2022 AUSTRALIA - WESTERN AUSTRALIA - Glomar Shoal - Subsea operations northwestwards**

Santos

On or about 23 December 2022, Vessel *Skandi Hercules* and support vessels will be conducting subsea operations associated with the decommissioning of the Mutineer, Exeter, Finucane and Fletcher fields in an area bounded by the following positions:

19° 19'.92 S 116° 50'.08 E

19° 19'.92 S 116° 30'.08 E

19° 09'.92 S 116° 30'.08 E

19° 09'.92 S 116° 50'.08 E.

Mariners are advised to navigate with caution in the area.

**Chart temporarily affected - Aus 327 - Aus 4722 (INT 722) - Aus 4723 (INT 723)**

**1034(T)/2022 AUSTRALIA - WESTERN AUSTRALIA - Joseph Bonaparte Gulf - Drill rig**

MODU *Valaris 107*

Drill rig *Valaris 107* is conducting drilling operations in position 13° 53'.70 S 128° 29'.05 E.

**Chart temporarily affected - Aus 318**

**1035(T)/2022 AUSTRALIA - WESTERN AUSTRALIA - Lombadina Point to Eclipse Shoals - Survey operations completed**

Former Notice - 843(T)/2022 is cancelled

Ocean Infinity

Cancel this notice on receipt.

**Chart formerly affected - Aus 323**

**1036(T)/2022 AUSTRALIA - WESTERN AUSTRALIA - Mullaloo - Scientific instruments**

Department of Transport WA Notice 5463/2022

Scientific instruments, 4m below the surface, exist in positions 31° 45'.82 S 115° 42'.64 E and 31° 47'.43 S 115° 42'.34 E.

**Chart temporarily affected - Aus 754**

**1037(T)/2022 AUSTRALIA - WESTERN AUSTRALIA - Ningaloo Reef - Scientific instrument**

Former Notice - 214(T)/2022 is cancelled

Department of Transport WA Notice 521/2022

Cancel this notice on receipt.

**Chart formerly affected - Aus 72 - Aus 746**

**1038(T)/2022 AUSTRALIA - WESTERN AUSTRALIA - North West Cape - Drill rig northwards***Former Notice* - 957(T)/2022 is cancelled

Australian Maritime Safety Authority Auscoast Warning 245/2022

Drill rig *Ocean Apex* is conducting drilling operations in position 21° 31'.39 S 114° 06'.59 E.**Chart temporarily affected - Aus 328 - Aus 329 - Aus 744****1039(T)/2022 AUSTRALIA - WESTERN AUSTRALIA - South West Break to Staggie Reef - Scientific instruments**

Department of Transport WA Notice 5456/2022

Scientific instruments, 4m below the surface, exist in the following positions:

31° 34'.33 S 115° 35'.61 E

31° 38'.12 S 115° 38'.07 E

31° 42'.36 S 115° 38'.93 E.

**Chart temporarily affected - Aus 754****1040(T)/2022 AUSTRALIA - SOUTH AUSTRALIA - Spencer Gulf - Light buoy relit***Former Notice* - 848(T)/2022 is cancelled

Department for Infrastructure and Transport SA

Cancel this notice on receipt.

**Chart formerly affected - Aus 136 - Aus 778****1041(T)/2022 SOUTHERN OCEAN - Rocket launch***Former Notice* - 999(T)/2022 is cancelled

Southern Launch

Rocket launch activity may be conducted on two occasions during the period 10 to 25 December 2022.

The rocket will be launched south from position 34° 56'.04 S 135° 38'.54 E.

Public notification of target launch days will be made on Southern Launch's social media channels and navigation warnings issued by JRCC Australia. On target launch days, local advisory broadcasts will be made on VHF Ch 16 and Ch 81.

Rocket components may impact the waters within an area bounded by the following positions:

40° 30'.0 S 135° 25'.0 E

40° 30'.0 S 137° 15'.0 E

37° 42'.0 S 137° 15'.0 E

35° 00'.0 S 135° 55'.0 E

35° 00'.0 S 135° 25'.0 E.

Mariners are advised to navigate with caution and keep well clear of the area.

**Chart temporarily affected - Aus 343 - Aus 346 - Aus 485 - Aus 776 - Aus 4709 (INT 709)****1042(T)/2022 AUSTRALIA - VICTORIA - Port Phillip - Obstruction removed***Former Notice* - 913(T)/2022 is cancelled

Ports Victoria Notice 419(T)/2022

Cancel this notice on receipt.

**Chart formerly affected - Aus 143 - Aus 155****1043(T)/2022 AUSTRALIA - VICTORIA - Port Phillip - Martha Cove Harbour - Dredging operations completed***Former Notice* - 500(T)/2021 is cancelled

Ports Victoria Notice 61(T)/2021

Cancel this notice on receipt.

**Chart formerly affected - Aus 143**

**1044(T)/2022 AUSTRALIA - VICTORIA - Port Phillip - Rye - Harbour works completed**

*Former Notice* - 133(T)/2022 is cancelled

Parks Victoria Notice 437/2022

Cancel this notice on receipt.

**Chart formerly affected - Aus 143**

**1045(T)/2022 AUSTRALIA - VICTORIA - Port Phillip - Point Nepean - Light buoy restored**

*Former Notice* - 1000(T)/2022 is cancelled

Parks Victoria Notice 443/2022

Cancel this notice on receipt.

**Chart formerly affected - Aus 143 - Aus 144**

**1046(T)/2022 AUSTRALIA - VICTORIA - Port Phillip - Mud Islands - Light buoy northeastwards restored**

*Former Notice* - 1001(T)/2022 is cancelled

Ports Victoria Notice 426(T)/2022

Cancel this notice on receipt.

**Chart formerly affected - Aus 143**

**1047(T)/2022 AUSTRALIA - VICTORIA - Venus Bay - Scientific instrument**

Safe Transport Victoria Notice 417(T)/2022

A special light buoy, *Fl.Y.2.5s*, exists in position 38° 39'.29 S 145° 42'.25 E.

**Chart temporarily affected - Aus 801**

II

**HYDROGRAPHIC REPORTS**

NIL



*To accompany Australian Notice to Mariners 1013/2022*

ELECTRONIC NAVIGATIONAL CHART (ENC)  
Larger scale ENC content exists in this area.  
When using electronic navigation systems,  
certain vessels (e.g. restricted by depth or  
size) may benefit from the additional level of  
detail shown in the largest scale ENC  
product available.

*Note for chart Aus 744*

*To accompany Australian Notice to Mariners 1013/2022*

ELECTRONIC NAVIGATIONAL CHART (ENC)  
Larger scale ENC content exists in this area.  
When using electronic navigation systems,  
certain vessels (e.g. restricted by depth or  
size) may benefit from the additional level of  
detail shown in the largest scale ENC  
product available.

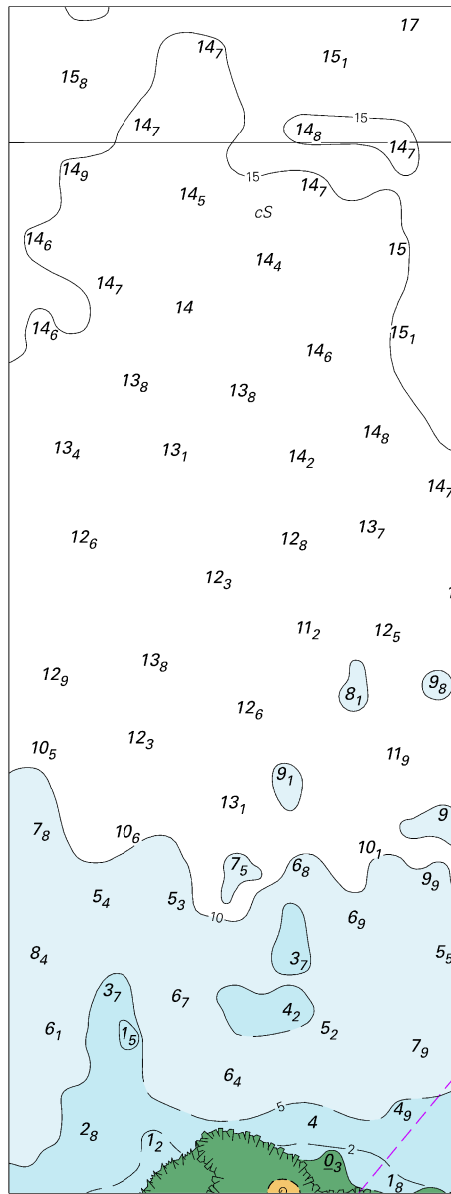
*Note for chart Aus 746*

*To accompany Australian Notice to Mariners 1013/2022*

ELECTRONIC NAVIGATIONAL CHART (ENC)  
Larger scale ENC content exists in this area.  
When using electronic navigation systems,  
certain vessels (e.g. restricted by depth or  
size) may benefit from the additional level of  
detail shown in the largest scale ENC  
product available.

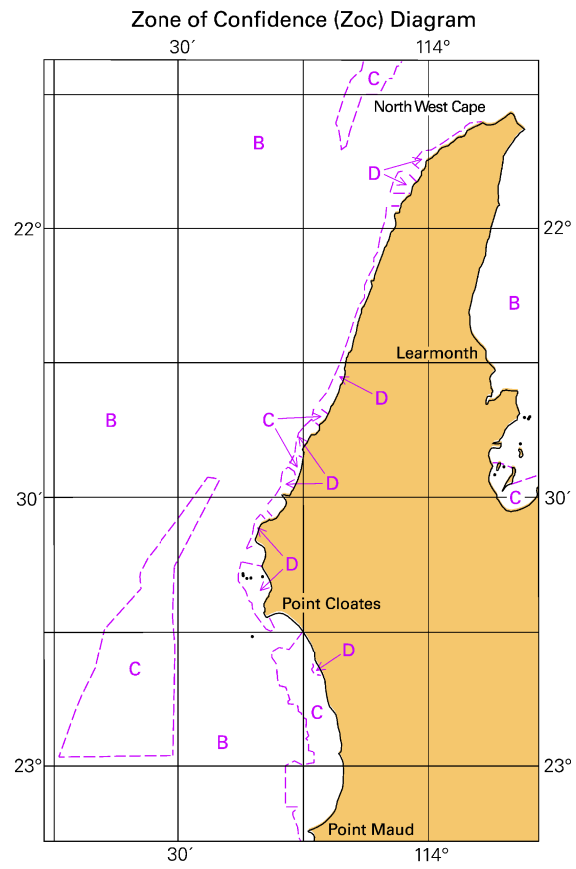
*Note for chart Aus 745*

To accompany Australian Notice to Mariners 1009/2022



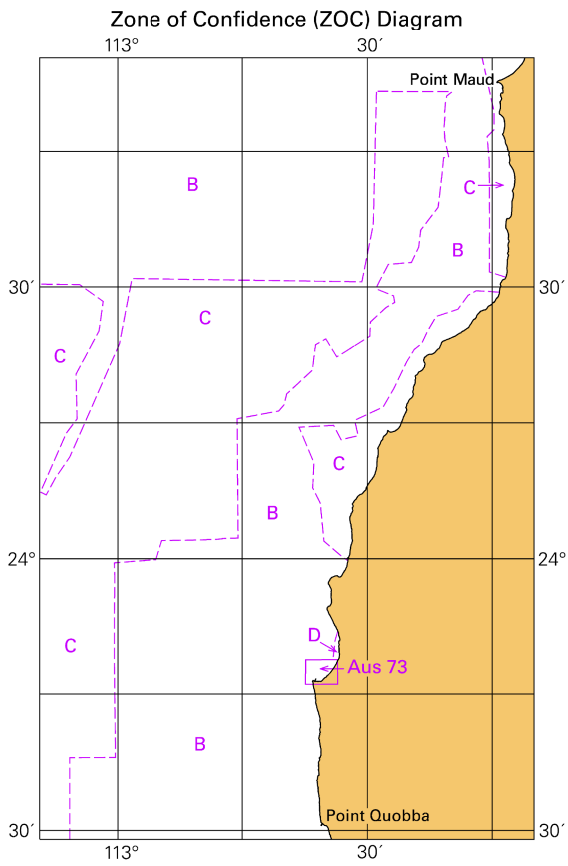
Block for chart Aus 25 (59.0 x 157.0mm)  
© Commonwealth of Australia 2022

To accompany Australian Notice to Mariners 1013/2022



© Commonwealth of Australia 2022  
*Block for chart Aus 745* (65.4 x 103.2mm)

To accompany Australian Notice to Mariners 1013/2022



Block for chart Aus 746

(65.0 x 113.3mm)

© Commonwealth of Australia 2022